

Antistatic carpet tile that covers it all — no more guess work regarding dissipative versus conductive. The only carpet tile designed for both electronics manufacturing and around powered equipment in end-user environments, it's specifically designed to meet **GroundSafe**[®] criteria for use around operational electronics, computers and telecommunications equipment.

SHADOWFX SOLIDS

Stock Colors



4113 Thunder Bay 24"

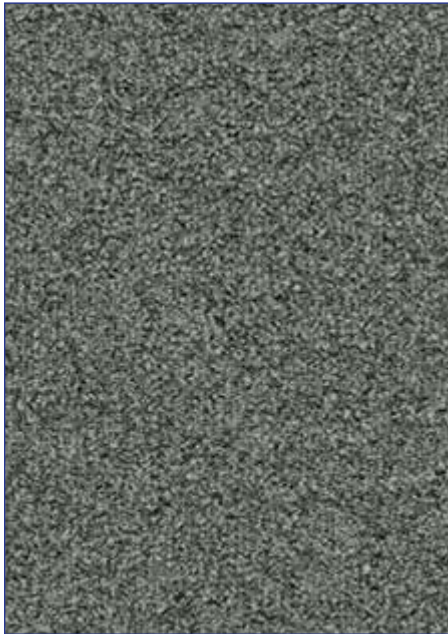


4114 Chesapeake Sandbar 24"



4115 Huntington Ravine 24"

Non-Stock Colors



4116 El Capitan 24"



4117 Allaghash 24"



4118 Moloaa Beach Rock 24"

ShadowFX™ Solids Carpet Tile

SPECIFICATIONS

Construction: Tufted textured loop

Yarn weight: 24 oz./sq. yd. (813.76 g/sm)

Stitches per inch: 10.0

Pile height: 0.2"

Yarn system: Aquafil type 6 nylon, 100% solution dyed, stain protection

Sizes: 24" x 24"

Conductive fiber: Staticworx Helix 44 denier conductive fiber

kV rating: AATCC 134-1996 electrostatic propensity: less than 0.4 kV (400 volts). Tested at 12% relative humidity at 20°C and 70°F.

Body voltage generation (BVG) per ANSI/ESD S97.2: Less than 50 volts: Meets ANSI/ESD S20.20 requirements for use in EPAs in electronics manufacturing.

Electrical resistance:

ESD S7.1/NFPA 99 Resistance Characterization of Materials: Nine or more readings from surface to groundable point. Tested with an applied voltage of 100V. Measured in Ohms, $1.0 \times 10^6 - 1.0 \times 10^8$.

ESD S7.1/NFPA 99 Resistive Characterization of Materials: Nine or more readings between electrodes placed 1 foot apart. Tested with an applied voltage of 100V. Measured in Ohms, $1.0 \times 10^6 - 1.0 \times 10^8$. Meets Motorola R56 and ATIS-0600321 for use in telecommunications applications. Meets FAA STD 019e for use in flight control applications.

Electrical Resistance/Voltage Test ANSI/ESD S-20.20: Approved for use in EPAs in electronics manufacturing with approved footwear system. Results within recommended range $< 35 \times 10^6$ Ohm or < 100 volts.

D.O.D. HDBK263A, Section 40.1.2: Meets recommended guidelines for sensitive ESD devices, Class 1.

Roller Caster Electrical Test (CET) proven. Product meets ANSI/ESD S20.20 after 125,000 cycles.

Groundable path: Copper ground strip

Grounding frequency: 1 per 1,000 sq. ft.

Backing systems: Permanent static-dissipative backing.

Adhesives: Use only Staticworx-approved conductive adhesives. GroundTack pressure sensitive. GroundWise corner pads for adhesive-free installations over raised access floors.

Availability: 500 yard minimum

Flammability:

ASTM E-648 flooring radiant panel — Class 1 ($\geq .45$ W/cm²)

ASTM E-662 NBS smoke density — less than 450

Installation method: Monolithic

ShadowFX Solids - Carpet Tile

Specifically designed to meet GroundSafe Criteria for use around operational electronics, computers and telecommunications equipment, some attributes include:

- 24" by 24" tile size
- Aquafil type 6 nylon, 100% solution dyed
- Multiple height tip shear loops eliminate unsightly seams
- Perfect for raised access floors
- 62% recycled content (57% post-industrial, 5% post-consumer)

Meets the following standards:

- Motorola R56 : For use in 9-1-1 dispatch facilities
- FAA STD 019e: For flight control applications
- NFPA 99: For use in healthcare facilities
- ASTI-0600321.2010: For telecommunications rooms
- ANSI/ESD S20.20-2007: For electronics handling

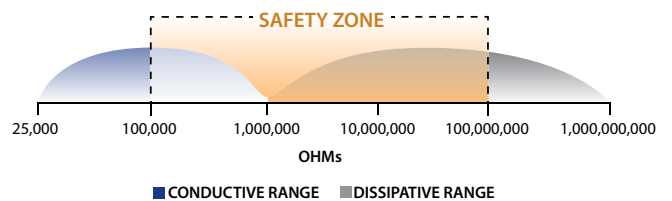
Additional benefits:

- Lifetime static control
- Safe for use around operational telecommunications equipment
- Ideal for installation over bare concrete and raised access floors.
- Installs with releasable adhesives for easy removal and relocation
- Random placement non-directional pattern
- No need for adhesive over metal raised access panels
- Green Label Plus – Certified
- Can be cleaned like any standard carpet



Green Label Plus is a voluntary industry testing program for carpet products that establishes the highest standard for indoor air quality (IAQ) ever set by the carpet industry. Tested by an independent, certified laboratory, carpets with this label meet stringent criteria for low chemical emissions.

Your "Sweet Spot" for Safe Conductivity



All Staticworx flooring is within the safe range shown here.

